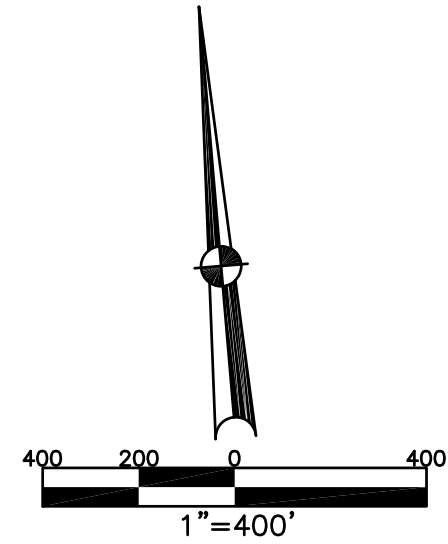


BETHEL TWP.
MIAMI COUNTY, OHIO



ABBREVIATION LEGEND	
2014OR-07759	= RECORDER'S DOCUMENT NUMBER
OR 257-619	= OFFICIAL RECORD 257 PAGE 619
D.B. 613-172	= DEED BOOK 613, PAGE 172
REC. 15-72	= RECORDER'S PLAT BOOK 15, PAGE 72
LND. 33-15	= LAND SURVEY VOLUME 33, PAGE 15
LOT 19-12	= LOT SURVEY VOLUME 19, PAGE 12
R.R. 8-29	= ROAD RECORD VOLUME 8, PAGE 29
R/W	= RIGHT OF WAY
CL	= CENTERLINE
AC.	= ACRES
TWP.	= TOWNSHIP
TR.	= TRACT
Ⓢ	= LOT CREATED BY RECORDER'S PLAT

LINE LEGEND	
	Blow-up Boundary
	Property Line
	Lot Split Line
	Section Line
	Centerline
	Right-of-Way Line
	Corporation Line

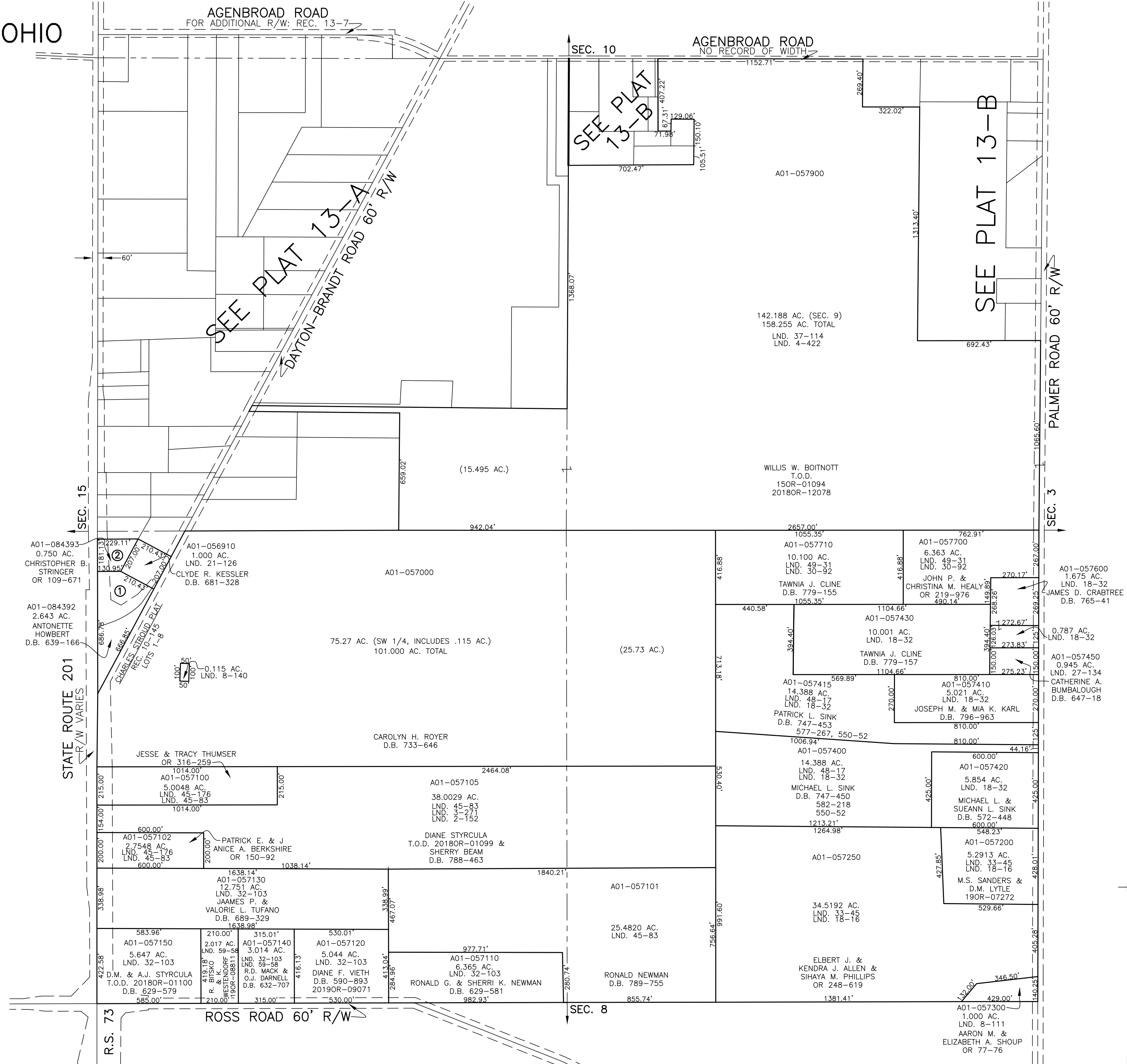
SURVEY INDEX	
NORTHEAST QUARTER	
LND. 4-422	
LND. 37-114	
SOUTHEAST QUARTER	
LND. 2-152	
LND. 2-154	
LND. 3-271	
LND. 8-111	
LND. 18-16	
LND. 18-32	
LND. 27-134	
LND. 30-92	
LND. 33-45	
LND. 45-83	
LND. 48-17	
LND. 49-31	
SOUTHWEST QUARTER	
LND. 2-152	
LND. 2-154	
LND. 3-271	
LND. 8-140	
LND. 21-126	
LND. 32-103	
LND. 45-176	
LND. 59-58	
NORTHWEST QUARTER	

PREPARED BY: MIAMI COUNTY ENGINEER'S MAP DEPARTMENT
PAUL P. HUELSKAMP, P.E., P.S., COUNTY ENGINEER
DATE: MARCH 3, 2016 MB
REVISED: August 13, 2019 MBROMLEY

SECTION 9 TOWN 2 RANGE 9

PARCEL NUMBER
AO1 -

PLAT 13



ROSS ROAD 60' R/W

STATE ROUTE 201
R/W VARIES

SEC. 15

SEC. 10

SEC. 8

SEC. 3

PALMER ROAD 60' R/W