

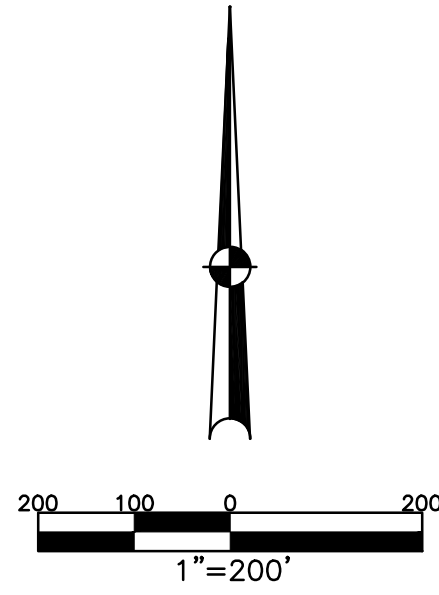
MONROE TWP.
MIAMI COUNTY, OHIO

SECTION 31 TOWN 4 RANGE 6
SE 1/4

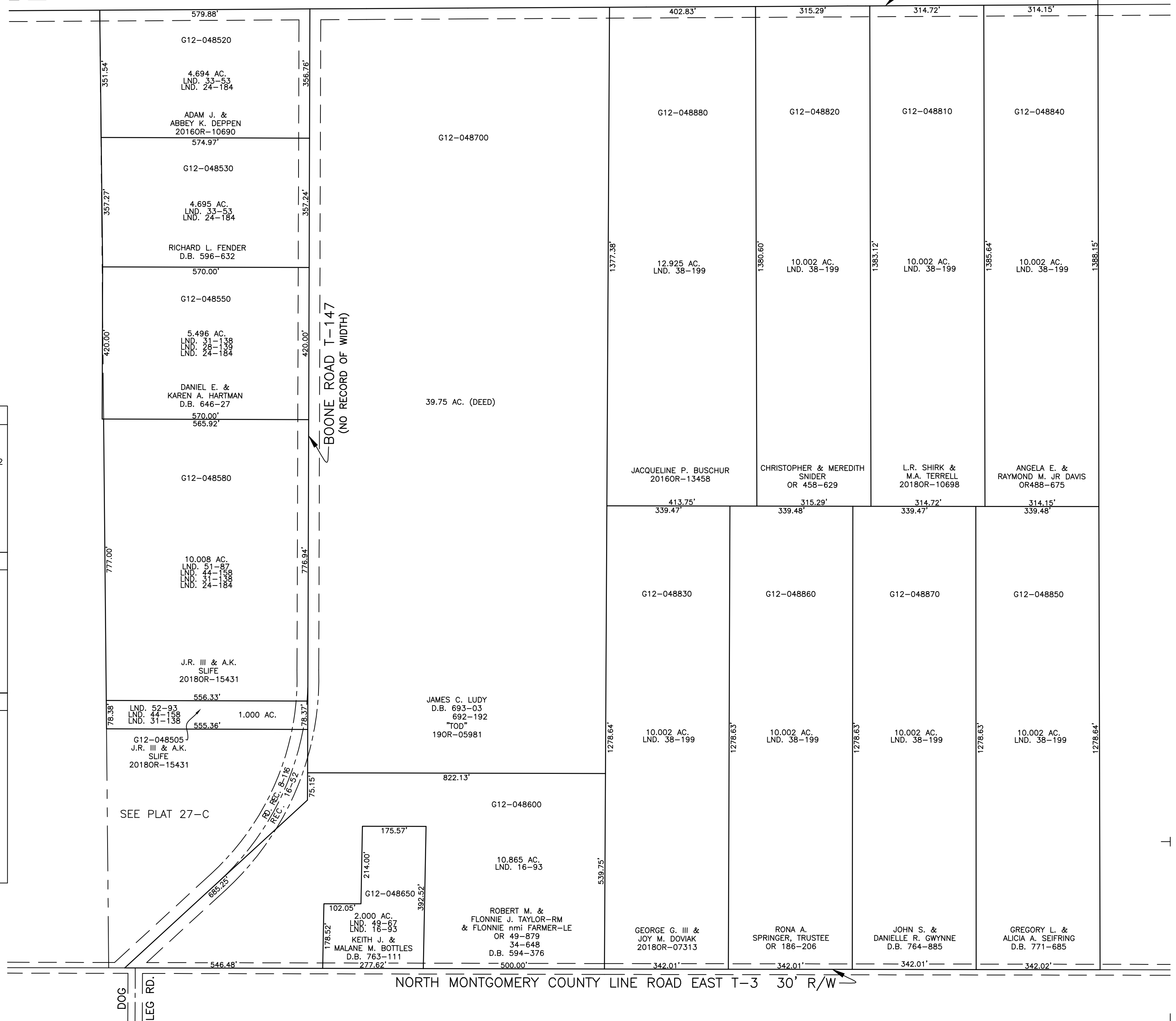
PARCEL NUMBER
G12-_____

PLAT 27-D

GINGHAMSBURG-FREDERICK ROAD #42 60' R/W



ABBREVIATION LEGEND		
20140R-07759	= RECORDER'S DOCUMENT NUMBER	
OR 257-619	= OFFICIAL RECORD 257 PAGE 619	
D.B. 613-172	= DEED BOOK 613, PAGE 172	
REC. 15-72	= RECORDER'S PLAT BOOK 15, PAGE 72	
LND. 33-15	= LAND SURVEY VOLUME 33, PAGE 15	
LOT 19-12	= LOT SURVEY VOLUME 19, PAGE 12	
R.R. 8-29	= ROAD RECORD VOLUME 8, PAGE 29	
R/W	= RIGHT OF WAY	
C	= CENTERLINE	
AC.	= ACRES	
TWP.	= TOWNSHIP	
TR.	= TRACT	
Ⓢ	= LOT CREATED BY RECORDER'S PLAT	
LINE LEGEND		
	Blow-up Boundary	
	Property Line	
	Lot Split Line	
	Section Line	
	Centerline	
	Right-of-Way Line	
	Corporation Line	
SURVEY INDEX		
LND. 16-93	REC. 16-52	
LND. 24-184	RD. REC. 8-116	
LND. 28-139		
LND. 31-138		
LND. 33-53		
LND. 38-199		
LND. 44-158		
LND. 49-67		
LND. 51-87		
LND. 52-93		



PREPARED BY: MIAMI COUNTY ENGINEER'S MAP DEPARTMENT
PAUL P. HUELSKAMP, P.E., P.S., COUNTY ENGINEER
DATE: JULY 5, 2018 MDB

REVISED: June 6, 2019 DVENTURA